



EVERYDAY COLOUR
PATRICK EARLE

An exhibition co-curated by Art for Guernsey & Patrick Earle

20.05 - 29.05.2022

art
for Guernsey

EVERYDAY COLOUR
PATRICK EARLE

An exhibition co-curated by Art for Guernsey & Patrick Earle

ART FOR GUERNSEY AND PATRICK EARLE TO CO-CURATE EXHIBITION AT BEAU SEJOUR

Open exhibition Friday 20 May - Sunday 29 May



Patrick Earle
Self Portrait

In May, Art for Guernsey will be supporting abstract colourist and figurative artist Patrick Earle to co-curate an exciting new exhibition in the David Ferguson Hall at Beau Sejour.

The show will offer a unique insight into Patrick's exploration of colour and light in his bold and exciting works, opening our eyes as to how we process and experience what we see.

Patrick Earle, who lives in Guernsey, seeks to explore the profound joy and beauty in the visual experience through his art. "Our minds seek to label and categorise the things that we see so that we can process them. In doing so we lose the immediacy of what is in front of us: contrasts in light and shade, energy, and colours and their vibrancy. Colour has a special place in our hearts and souls - there is more to be experienced and relished," said Patrick.





“

MERE COLOURS
SPEAK TO THE

SOUL

IN A *THOUSAND*

DIFFERENT

WAYS

”

OSCAR WILDE

EVERYDAY COLOUR

PATRICK EARLE

An exhibition co-curated by Art for Guernsey & Patrick Earle



JOCK PETTITT

Director

Art for Guernsey

ART FOR GUERNSEY'S JOCK PETTITT SAID:

"The bold and intensely colourful abstract works that Patrick creates demand further enquiry. Some instantly provide a connection for the viewer, others invite exploration that reveals layers that may not be immediately apparent. The immediate impact and richness of the paintings evolved into something more profound as I spent more time with them. Patrick's suggestion is to take a moment to sit and let the work unfold, much the same as taking in a favourite view in nature. With time the layers and details become clearer and more intimately understood."

"With the curation of this exhibition, we have sought to provide relevant space for shared and intimate experiences for every viewer, awash with colour and with all the usual supporting information and digital content."





“

COLOUR IN
PAINTING
IS ENTHUSIASM
IN LIFE

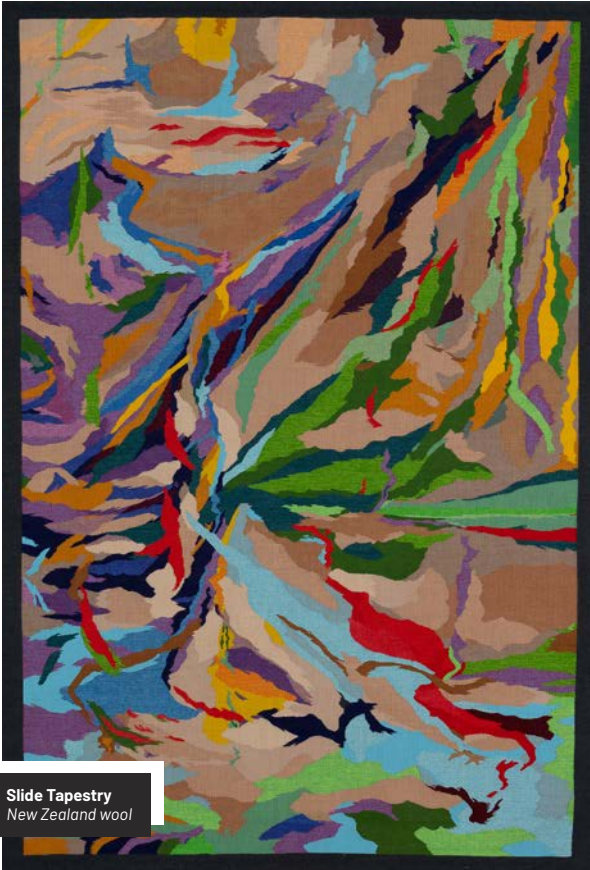
”

VINCENT VAN GOGH

EVERYDAY COLOUR

PATRICK EARLE

An exhibition co-curated by Art for Guernsey & Patrick Earle



Slide Tapestry
New Zealand wool

Patrick said: "I focus on trying to get a sense of the visual experience, rather than a particular image or thing. An engagement with colour, its rhythms and chords and some sense of what it might be. The discipline of painting beyond the common denominator of what is known, to the ambiguity of what might be, brings us back to ourselves."

Patrick attended the University of Cambridge and trained at Heatherley's School of Art and West Dean College. Inspired by artists such as Diebenkorn, Monet and Bomberg, he started out as a figurative painter, but in recent years has increasingly embraced abstract colour-based compositions, moving from painting most of his work in oils to creating them digitally. For his original artworks, Patrick combines his digitally produced artworks on canvas with applied acrylic paint. He also collaborates with Hines of Oxford to create one-off, hand-knotted tapestries from his digital works. The tapestries are made from New Zealand wool and Chinese silk, the largest comprising up to 2 million individual knots in the traditional Aubusson method.



“

COLOUR IS THE
PLACE
WHERE OUR
BRAIN
AND THE
UNIVERSE
MEET

”

PAUL KLEE

EVERYDAY COLOUR

PATRICK EARLE

An exhibition co-curated by Art for Guernsey & Patrick Earle



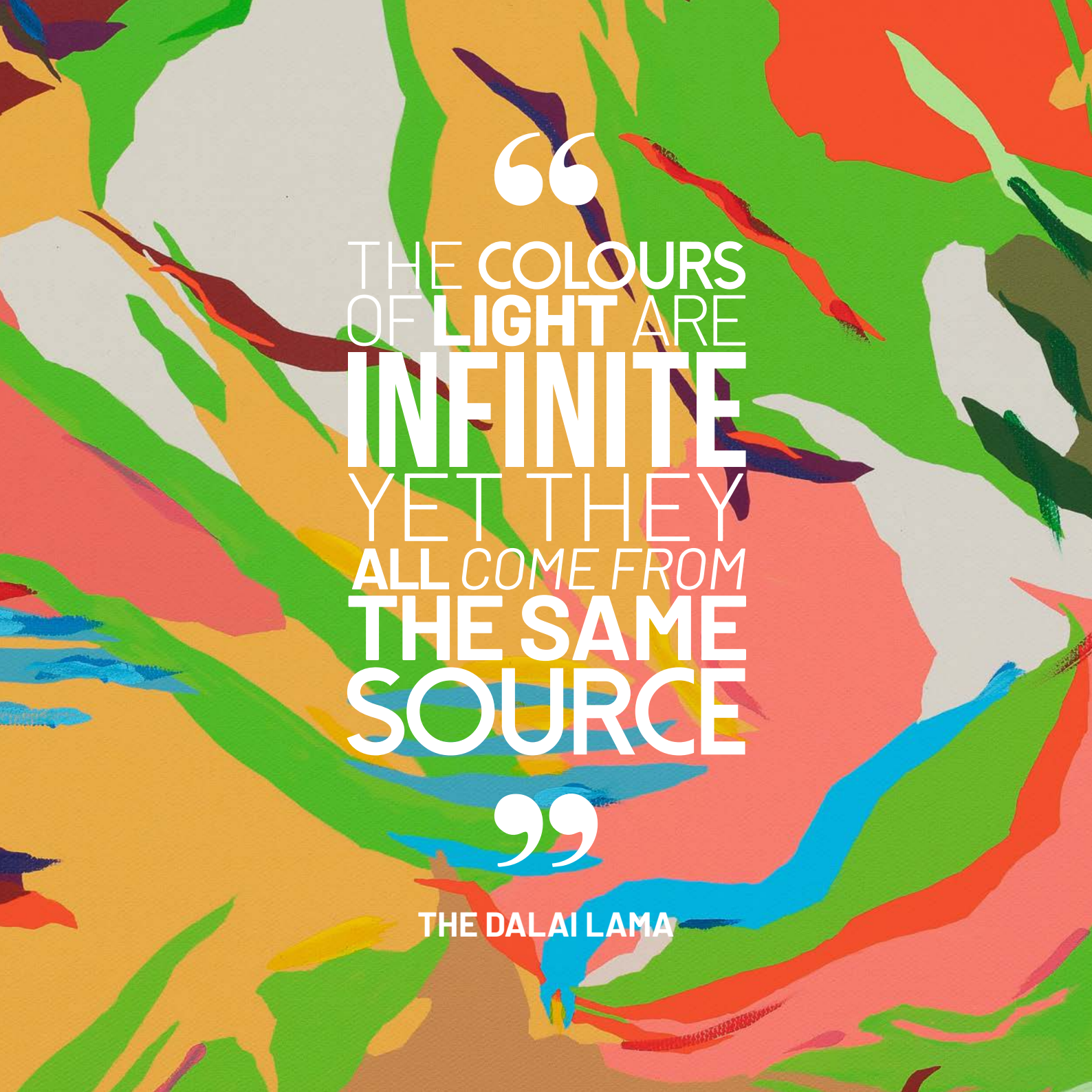
STEVE CAMM

Director
Art for Guernsey

ART FOR GUERNSEY'S STEVE CAMM SAID:

"Visitors will be able to purchase the works on show, and I am delighted that Patrick has decided to share the proceeds between local charities the Samaritans and Art for Guernsey. The original artworks will be available on canvas or as unique hand-knotted tapestries. For the more technically minded, there will also be a number of novel NFTs of the digital artworks, each coming with the right to access artist-quality prints."





“
THE COLOURS
OF LIGHT ARE
INFINITE
YET THEY
ALL *COME FROM*
THE SAME
SOURCE

”

THE DALAI LAMA

EVERYDAY COLOUR

PATRICK EARLE

An exhibition co-curated by Art for Guernsey & Patrick Earle



DAVID UMMELS
Chairman
Art for Guernsey

ART FOR GUERNSEY'S DAVID UMMELS ADDED:

"As you will have come to expect from an Art for Guernsey exhibition, this will be an immersive experience augmented with supporting information and digital content, and featuring a few surprises. We look forward to welcoming everyone, including students from our schools, to experience the show. The exhibition will be fully accessible to all, and entry will be free of charge with donations welcome in support of the charities."





EVERYDAY COLOUR
PATRICK EARLE

THE OPENING HOURS FOR THE EXHIBITION ARE 9AM-5PM ON WEEKDAYS, 10AM-7PM ON SATURDAYS AND 10AM-5PM ON SUNDAYS.

In addition, on the evening of Friday 27 May, Art For Guernsey and Patrick Earle, in association with Hanois Baroque, are hosting a unique Baroque concert amidst the exhibition to raise funds for the Guernsey Music Bursary Consortium and Art for Guernsey. Hanois Baroque are thrilled to welcome Professor Adrian Butterfield (historical violin) and Professor Rachel Brown (historical flute) of the Royal College of Music. Adrian and Rachel will be joined by the core members of Hanois Baroque: Max Wong, FRSM and Francois Cloete, FRCO.

The programme will include a number of well-known works as well as some lesser known works to discover. Vivaldi's double-violin La Follia is as electrifying as J. S. Bach's Flute Sonata BWV 1034 is artful and sophisticated. Bach's Fourth Partita BWV 828 showcases the magnificent double-manual harpsichord of the Guernsey Harpsichord Trust. Lesser known works include a violin sonata in Jean-Marie Leclair's Troisième Livre, as well as a violin sonata by J. H. Schmelzer (1664) which received immense critical acclaim at St James in 2020. The programme is rounded off by some unmissable classics: an authentic version of Pachelbel's Canon and a wistful arrangement of Handel's Verdi Prati from Alcina, HWV 34.

Tickets are from £35, available exclusively via Eventbrite.

PATRICK EARLE SAID:

"Every day, every moment, colour surrounds us. It is joyful and intense but without judgement. I focus on the sense of visual experience, rather than a particular image. The intensity of colour when you look at it, the structure of shapes in the natural world, the shifting nature of colour, reflection and movement. How everything changes. The joy of the experience, of being, of the energy of the universe."

"Please come to the exhibition. I hope that you enjoy it."

